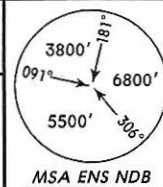
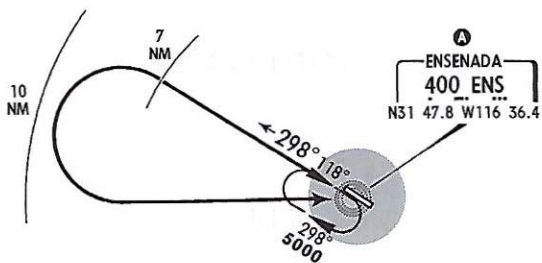


Apt Elev
66'

Trans level: FL195 Trans alt: 18500'



DEPARTURE RWY 29
ENSENADA THREE (ENS3)



Maximum distance outbound leg 7 NM.

Gnd speed-KT	80	100	120	140	160	180	200
TIME	5:15	4:12	3:30	3:00	2:38	2:20	2:06

A MINIMUM CROSSING ALTITUDE		
TIJ	V-1	5500'
MXL	V-58	5500'
PPE	V-7	5500'
SQN	V-1	5500'

INITIAL CLIMB

Climb via 298° bearing from ENS until 7 NM, then turn LEFT within 10 NM to ENS and depart at the MCA A for the assigned route or in accordance with ATC instructions.

CHANGES: Bearings.

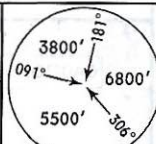
© JEPPESEN SANDERSON, INC., 2004, 2006. ALL RIGHTS RESERVED.

75-997

*ENSENADA Tower 119.75

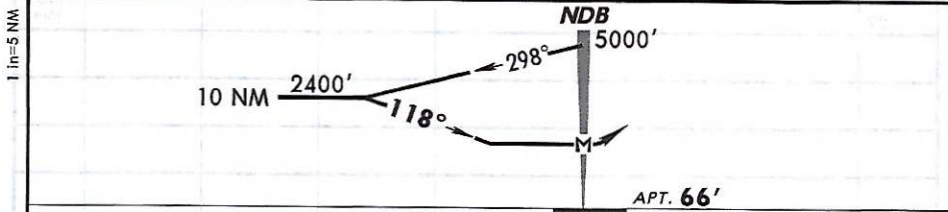
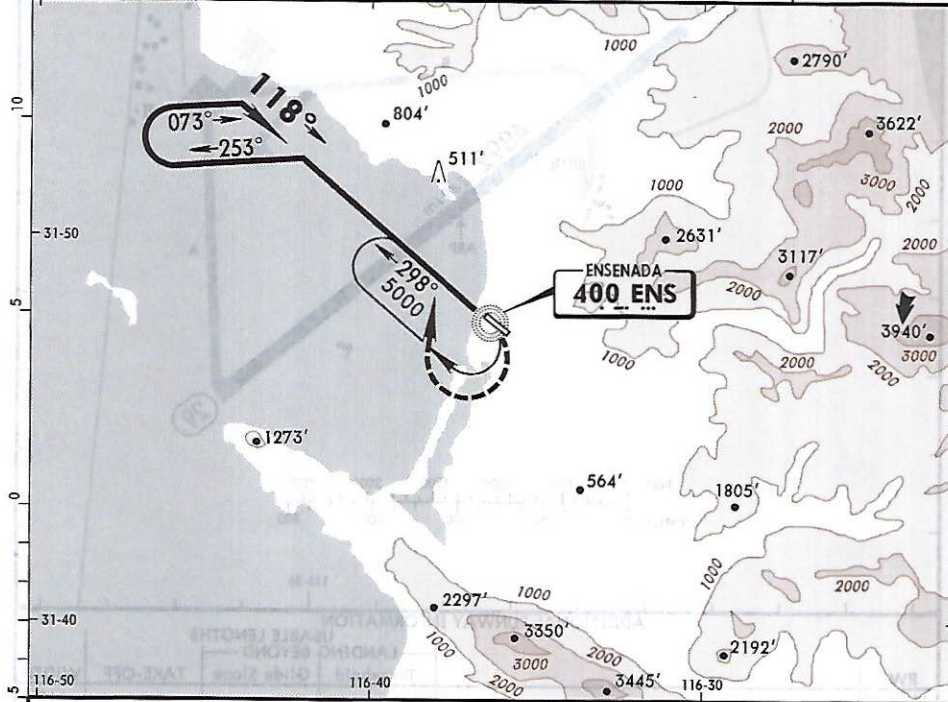
BRIEFING STRIP™

NDB ENS 400	Final Apch Crs 118°	No FAF	MDA(H) (CONDITIONAL) 860' (794')	Apt Elev 66'
--------------------------	----------------------------------	--------	---	---------------------



MISSED APCH: Climbing RIGHT turn to intercept the 298° bearing from ENS NDB and proceed on the approach track to the minimum holding altitude.

Alt Set: MB (IN on req) Apt Elev: 2 MB Trans level: FL 195 Trans alt: 18500' MSA ENS NDB



MAP at NDB				RT	ENS 400 298°
------------	--	--	--	----	----------------------------------

STRAIGHT-IN LANDING RWY 11			CIRCLE-TO-LAND			
MDA(H) 860' (794')			Not Authorized Northeast of Runway			
DAY		NIGHT	DAY		NIGHT	
A	1	NA	Max Kts	MDA(H)	NA	
B	1 1/4		90			900' (834') - 1
C	2 1/4		120			900' (834') - 1 1/4
D	NOT APPLICABLE		140	900' (834') - 2 1/2		
D	NOT APPLICABLE		D	NOT APPLICABLE		

CHANGES: AVASI removed.

© JEPPESEN, 2000, 2009. ALL RIGHTS RESERVED.

66-9-96

MMES/ESE

Apt Elev 66'
N31 47.7 W116 36.2

JEPPESEN

12 JUN 09

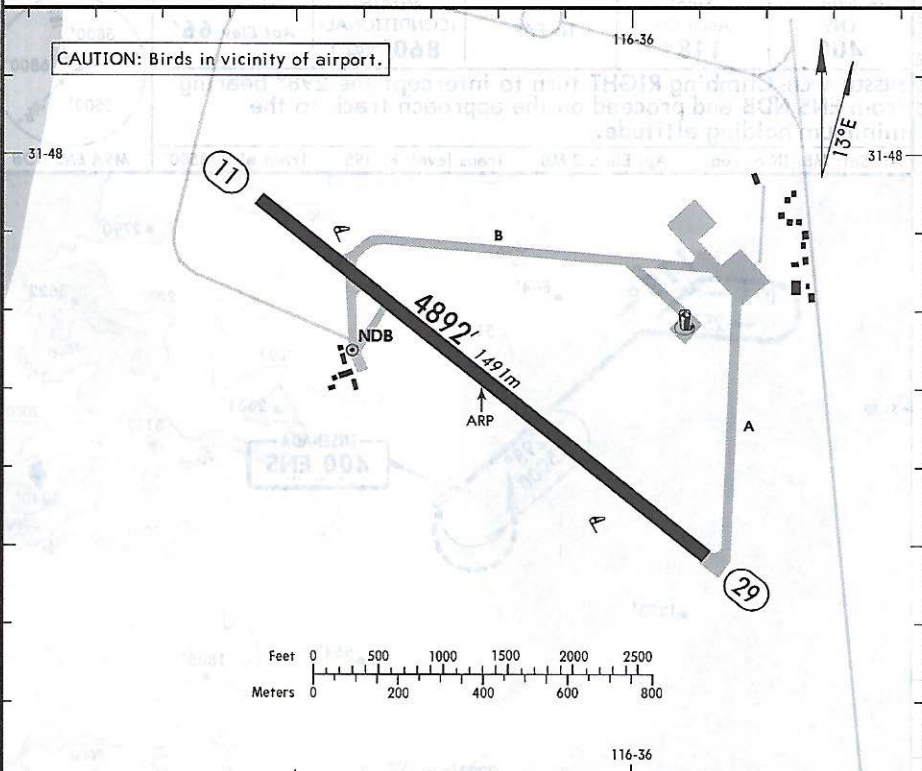
(16-1)

ENSENADA, MEXICO

GEN DIV P A A.L. SALINAS CARRANZA

*ENSENADA Tower 119.75

CAUTION: Birds in vicinity of airport.



ADDITIONAL RUNWAY INFORMATION

RWY	USABLE LENGTHS		TAKE-OFF	WIDTH
	LANDING Threshold	BEYOND Glide Slope		
11 29				115' 35m

	TAKE-OFF			
	Rwy 29		Rwy 11	
	DAY	NIGHT	DAY	NIGHT
1 & 2 Eng	200-1	NA	VFR	NA
3 & 4 Eng	200-3/4			

CHANGES: AVASI removed, UNICOM frequency removed.

© JEPPESEN, 2000, 2009. ALL RIGHTS RESERVED.