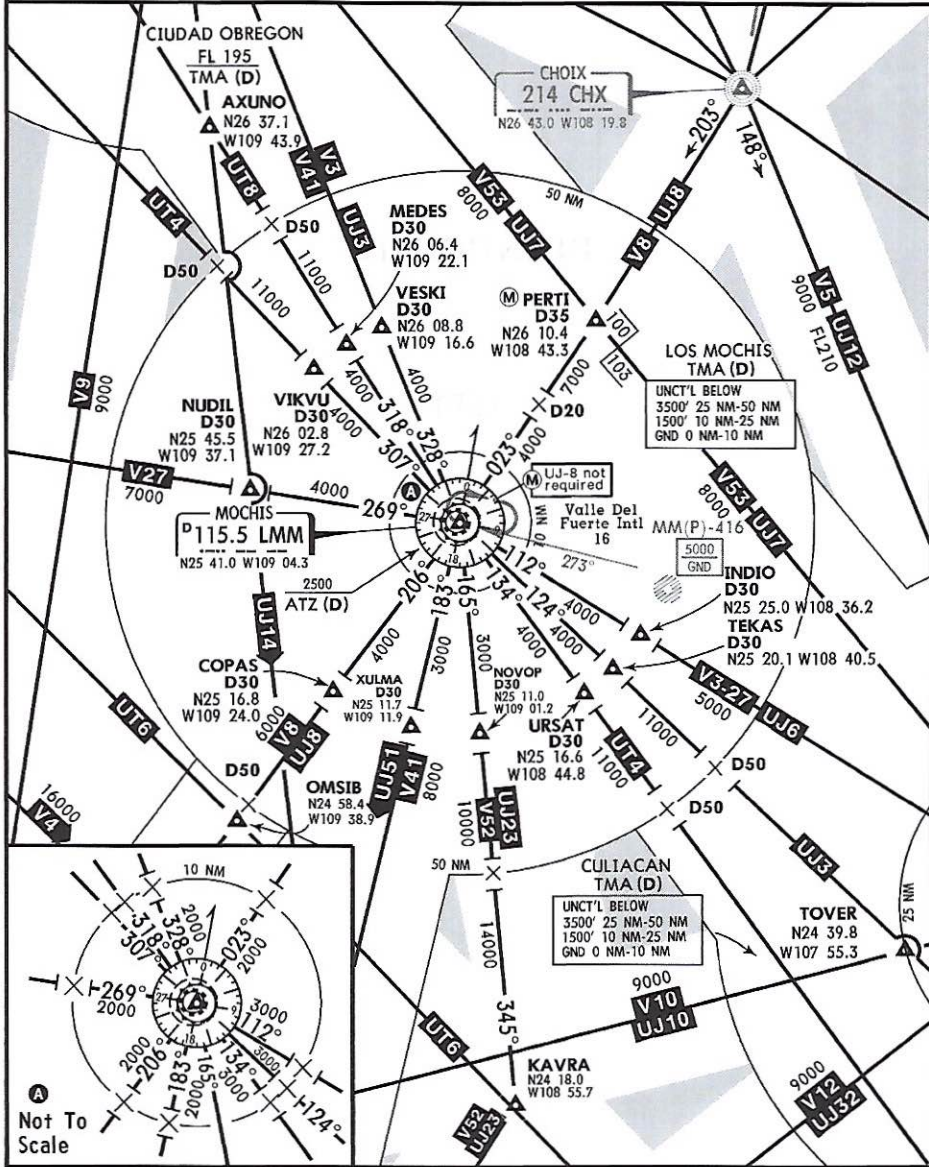


LOS MOCHIS Approach  
118.8

**SPEED RESTRICTIONS WITHIN MEXICO AIRSPACE**

**MAXIMUM IAS UNLESS OTHERWISE DEPICTED OR AUTHORIZED BY ATC**

At or below 3000' AGL within 10NM of any airport.....	200 KTS
At or below 10000' MSL within Mexico Airspace.....	250 KTS
At or below 10000' AGL within 30NM of any airport.....	250 KTS
<b>WITHIN CULIACAN TMA</b>	
At or below 3000' MSL of Culiacan Intl Apt and within 10NM of CUL VORDME.....	200 KTS
At or below 10100' MSL within 30NM of CUL VORDME.....	250 KTS
<b>WITHIN CIUDAD DE OBREGON TMA</b>	
At or below 3200' MSL within 10NM of CEN VORDME.....	200 KTS
At or below 10200' MSL within 30NM of CEN VORDME.....	250 KTS
<b>WITHIN LOS MOCHIS TMA</b>	
At or below 3000' MSL within 10NM of LMM VORDME.....	200 KTS
Below 10000' MSL within 30NM of LMM VORDME.....	250 KTS



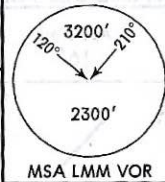
CHANGES: ATS system.

© JEPPESEN, 2007, 2016. ALL RIGHTS RESERVED.

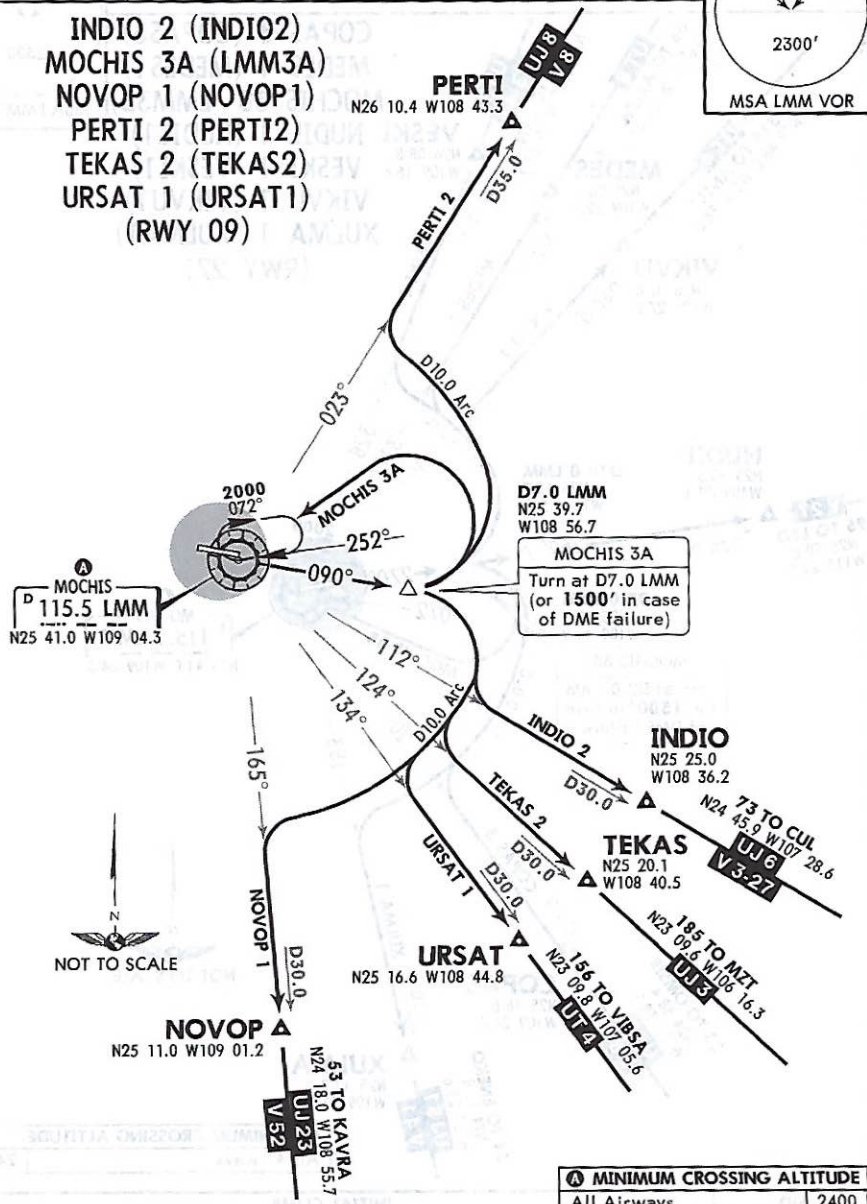
62-1103

Apt Elev  
16'

Trans level: FL195 Trans alt: 18500'



- INDIO 2 (INDIO2)
- MOCHIS 3A (LMM3A)
- NOVOP 1 (NOVOP1)
- PERTI 2 (PERTI2)
- TEKAS 2 (TEKAS2)
- URSAT 1 (URSAT1)
- (RWY 09)



<b>MINIMUM CROSSING ALTITUDE</b>	
All Airways	2400

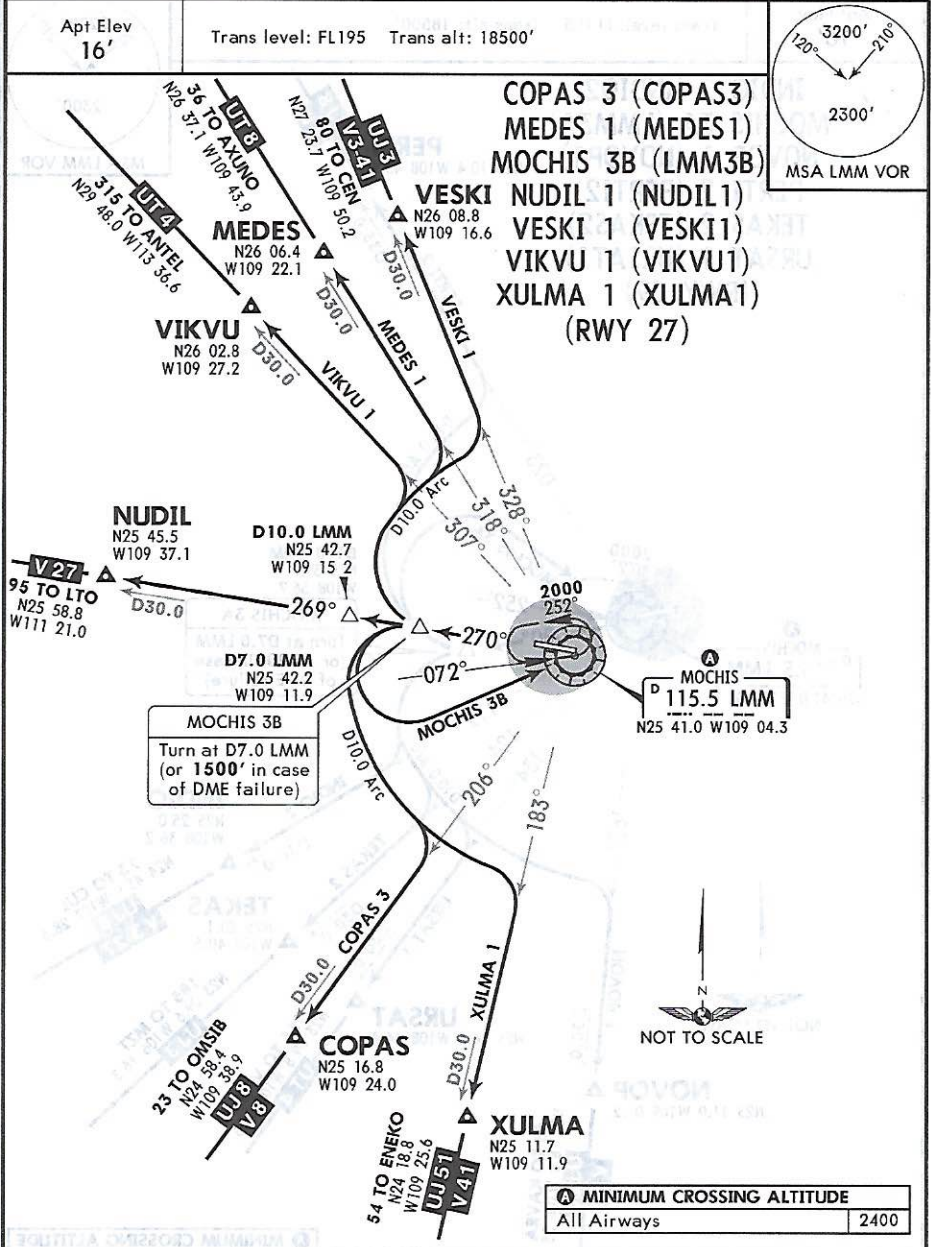
SID	INITIAL CLIMB
INDIO 2 NOVOP 1 TEKAS 2 URSAT 1	Climb via LMM R-090 to D7.0 LMM, turn RIGHT and proceed on the D10.0 Arc LMM to intercept the corresponding radial from LMM VOR to INDIO, NOVOP, TEKAS, or URSAT and continue on the assigned route or ATC instructions.
MOCHIS 3A	Climb via LMM R-090 to D7.0 LMM (or 1500' in case of DME failure.) Turn LEFT within 10 NM to LMM VOR and cross according to the MCA <b>A</b> for assigned route or ATC instructions.
PERTI 2	Climb via LMM R-090 to D7.0 LMM, turn LEFT and proceed on the D10.0 Arc LMM to intercept LMM R-023 to PERTI and continue on the assigned route or ATC instructions.

CHANGES: Procedures renamed, revised, renumbered, MSA.

© JEPPESEN, 2002, 2016. ALL RIGHTS RESERVED.

63-1105





SID	INITIAL CLIMB
COPAS 3 XULMA 1	Climb via LMM R-270 to D7.0 LMM, turn LEFT and proceed on the D10.0 Arc LMM to intercept the corresponding radial from LMM VOR to COPAS or XULMA and continue on the assigned route or ATC instructions.
MEDES 1 VESKI 1 VIKVU 1	Climb via LMM R-270 to D7.0 LMM, turn RIGHT and proceed on the D10.0 Arc LMM to intercept the corresponding radial from LMM VOR to MEDES, VESKI, or VIKVU and continue on the assigned route or ATC instructions.
MOCHIS 3B	Climb via LMM R-270 to D7.0 LMM (or 1500' in case of DME failure). Turn LEFT within 10 NM to LMM VOR and cross according to the MCA (A) for the assigned route or ATC instructions.
NUDIL 1	Climb via LMM R-270 to D10.0 LMM and continue on LMM R-269 to NUDIL. Continue on the assigned route or ATC instructions.

CHANGES: Procedures renumbered, added.

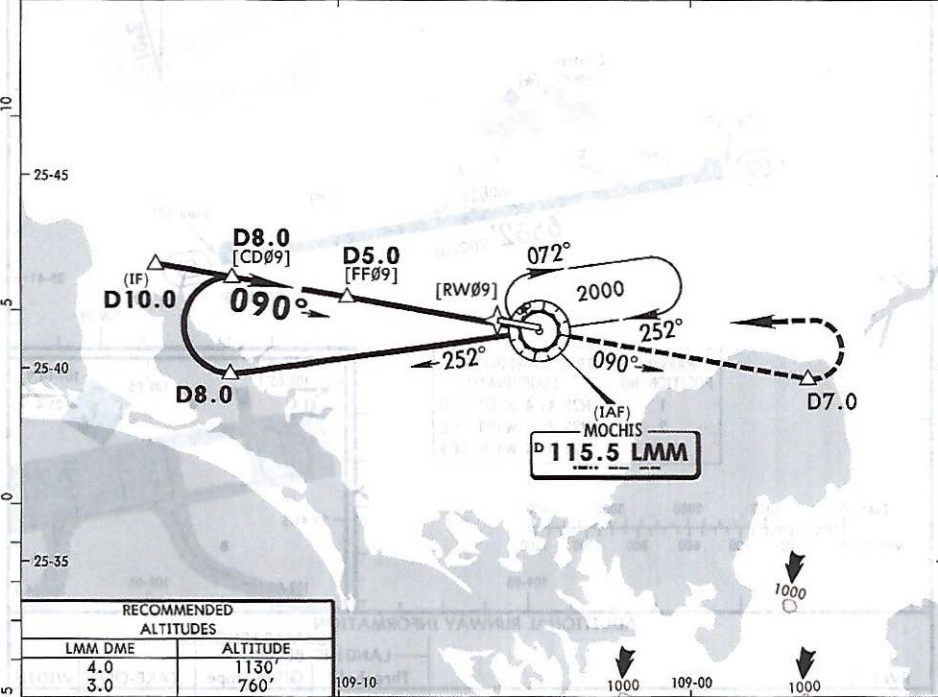
© JEPPESEN, 2002, 2016. ALL RIGHTS RESERVED.

MMLM/LMM  
VALLE DEL FUERTE INTL

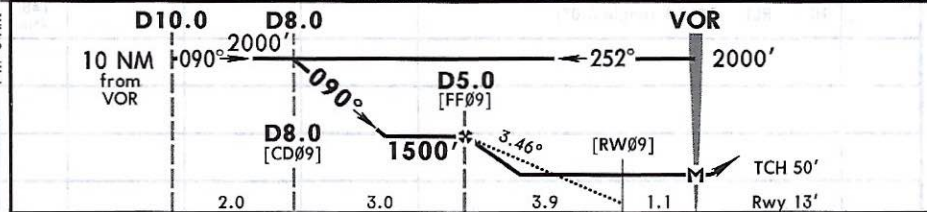
JEPPESEN  
22 APR 16 (13-1) Eff 28 Apr

LOS MOCHIS, MEXICO  
VOR DME 1 Rwy 09

*LOS MOCHIS Approach 118.8			*LOS MOCHIS Tower 118.8		
VOR LMM 115.5	Final Apch Crs 090°	Minimum Alt D5.0 1500' (1487')	MDA(H) 460' (447')	Apt Elev 16' Rwy 13'	
<b>MISSED APCH:</b> Climb on LMM VOR R-090 to D7.0, then turn LEFT within 10 NM to LMM VOR at the minimum holding altitude.					
Alt Set: MB (IN on req) Rwy Elev: 0 MB Trans level: FL 195 Trans alt: 18500'					MSA LMM VOR



RECOMMENDED ALTITUDES	
LMM DME	ALTITUDE
4.0	1130'
3.0	760'



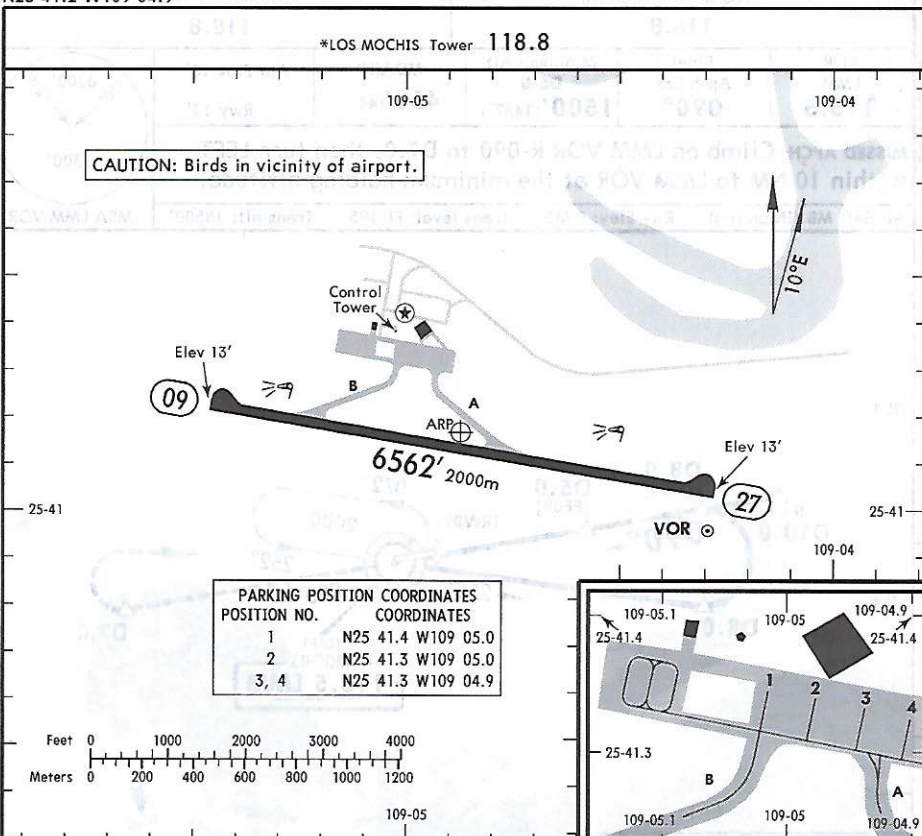
Gnd speed-Kts	70	90	100	120	140	160	REIL PAPI-L	LMM on 115.5 R-090	D7.0
Descent Angle 3.46°	4:29	5:51	6:12	7:35	8:57	9:80			
MAP at VOR or D5.0 to MAP	5.0	4:17	3:20	3:00	2:30	2:09			

STRAIGHT-IN LANDING RWY 09			CIRCLE-TO-LAND		
MDA(H) 460' (447')			MDA(H)		
A	1	Max Kts	90	560' (544') - 1	
B			120	560' (544') - 1	
C	1 1/4	140	560' (544') - 1 1/2		
D	1 1/2	165	580' (564') - 2		

MMLM/LMM  
 Apt Elev 16'  
 N25 41.2 W109 04.9

JEPPESEN  
 22 APR 16 (13-1) Eff 28 Apr

LOS MOCHIS, MEXICO  
 VALLE DEL FUERTE INTL



ADDITIONAL RUNWAY INFORMATION

RWY	USABLE LENGTHS	TAKE-OFF	WIDTH
	Threshold	Glide Slope	
09 27	HIRL REIL PAPI-L (angle 3.0°)		148' 45m

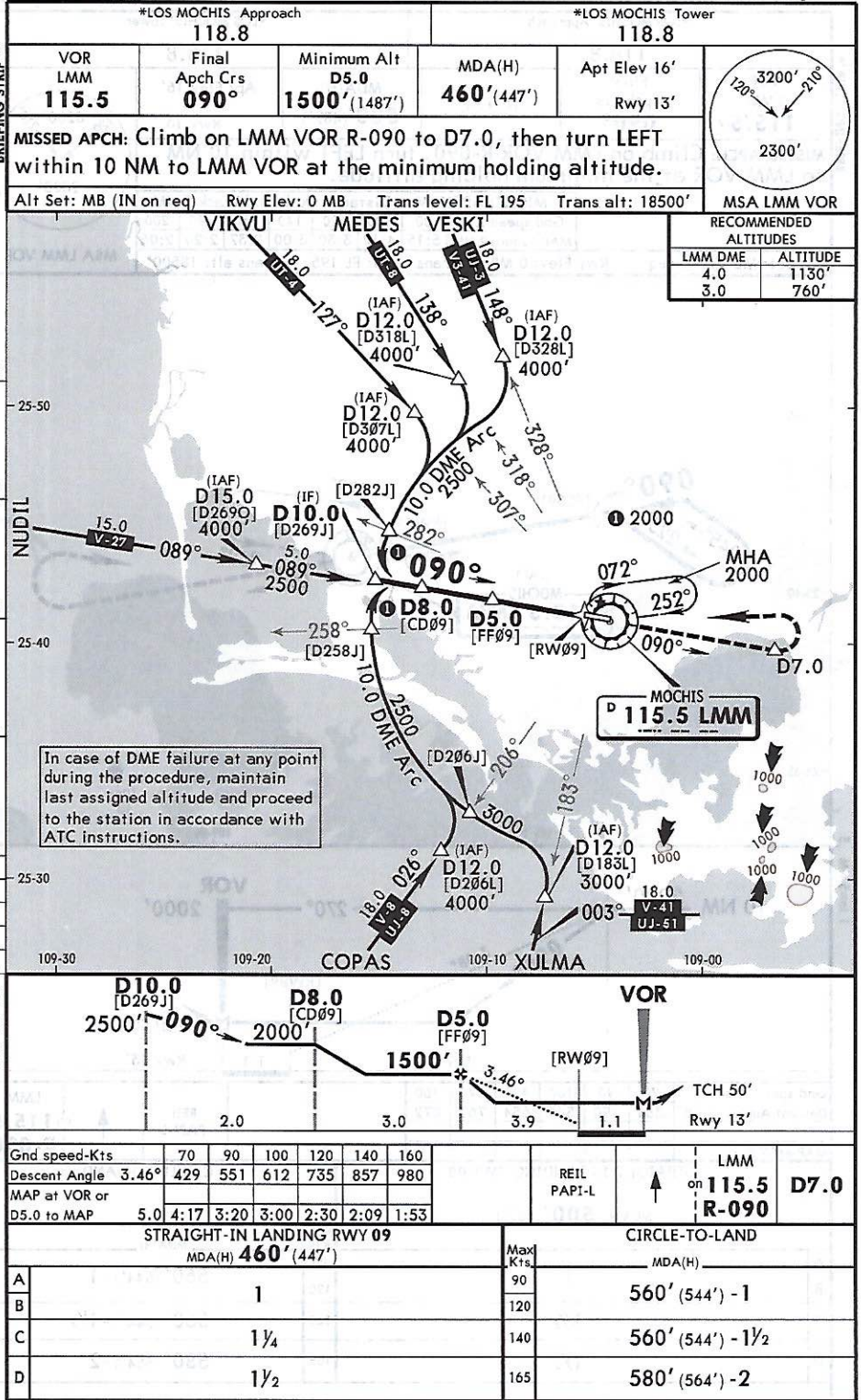
TAKE-OFF & DEPARTURE PROCEDURE

FOR FILING AS ALTERNATE

	All Rwys	
1 & 2 Eng	500-1	A B C D
3 & 4 Eng	300-1	
		800-2

For departure procedures and MCAs see Los Mochis departures 10-3, 10-3A.





CHANGES: Procedure.

© JEPPESEN, 2006, 2016. ALL RIGHTS RESERVED.

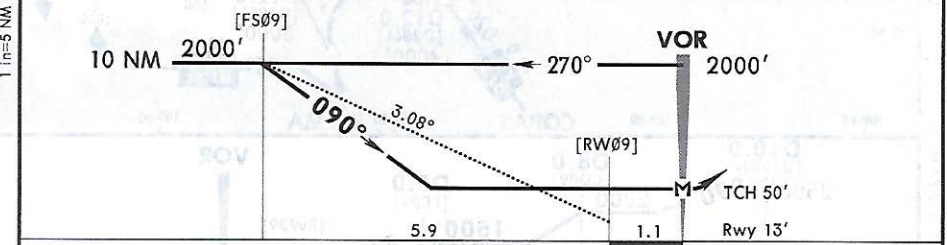
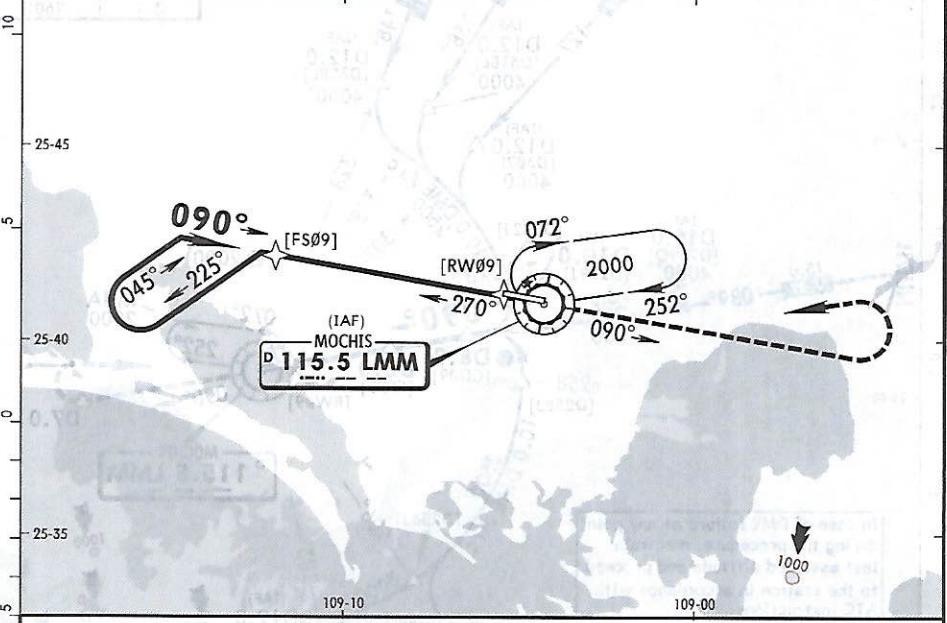
MMLM/LMM  
VALLE DEL FUERTE INTL

JEPPESEN  
22 APR 16 (13-3) Eff 28 Apr

LOS MOCHIS, MEXICO  
VOR Rwy 09

BRIEFING STRIP™

*LOS MOCHIS Approach			*LOS MOCHIS Tower																	
118.8			118.8																	
VOR LMM 115.5	Final Apch Crs 090°	No FAF	MDA(H) 500'(487')	Apt Elev 16'	Rwy 13'															
MISSED APCH: Climb on LMM VOR R-090, turn LEFT within 10 NM to LMM VOR at the minimum holding altitude.																				
MISSED APCH: Max Distance Outbound Track 7 NM																				
<table border="1"> <tr> <td>Gnd speed-Kts</td> <td>80</td> <td>100</td> <td>120</td> <td>140</td> <td>160</td> <td>180</td> <td>200</td> </tr> <tr> <td>MAP to turn 7 NM</td> <td>5:15</td> <td>4:12</td> <td>3:30</td> <td>3:00</td> <td>2:37</td> <td>2:20</td> <td>2:06</td> </tr> </table>						Gnd speed-Kts	80	100	120	140	160	180	200	MAP to turn 7 NM	5:15	4:12	3:30	3:00	2:37	2:20
Gnd speed-Kts	80	100	120	140	160	180	200													
MAP to turn 7 NM	5:15	4:12	3:30	3:00	2:37	2:20	2:06													
Alt Set: MB (IN on req) Rwy Elev: 0 MB Trans level: FL 195 Trans alt: 18500'																				



Gnd speed-Kts	70	90	100	120	140	160
Descent Angle 3.08°	381	490	545	654	763	872
MAP at VOR						

REIL PAPI-L ↑ LMM on 115.5 R-090

STRAIGHT-IN LANDING RWY 09			CIRCLE-TO-LAND		
MDA(H) 500'(487')			MDA(H)		
A		Max Kts 90	560'(544') - 1		
B	1	120	560'(544') - 1		
C	1 1/4	140	560'(544') - 1 1/2		
D	1 1/2	165	580'(564') - 2		

CHANGES: Rwy elev, MSA, bearings, missed apch, database identifiers, profile. © JEPPESEN, 2002, 2016. ALL RIGHTS RESERVED.

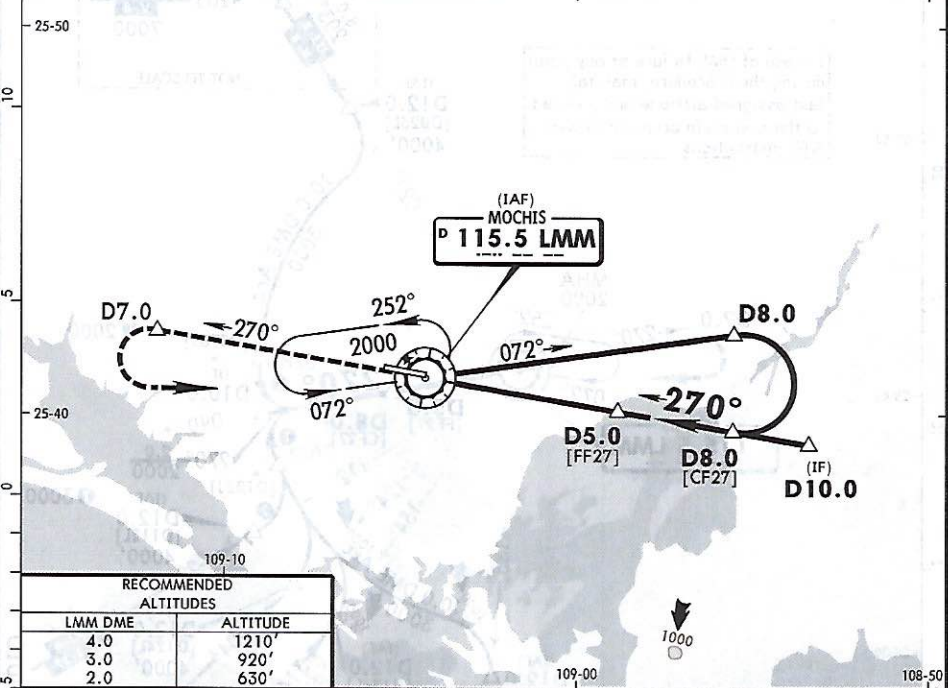


MMLM/LMM  
VALLE DEL FUERTE INTL

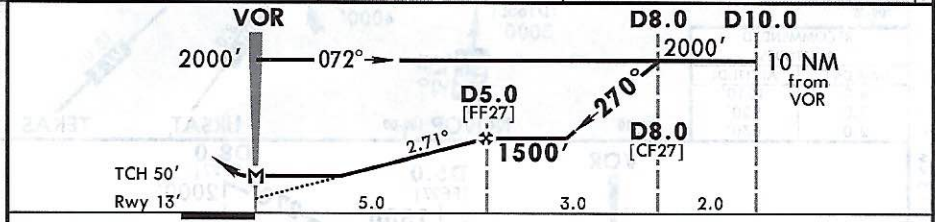
JEPPESEN  
22 APR 16 (13-4) Eff 28 Apr

LOS MOCHIS, MEXICO  
VOR DME 1 Rwy 27

*LOS MOCHIS Approach				*LOS MOCHIS Tower	
118.8				118.8	
VOR LMM <b>115.5</b>	Final Apch Crs <b>270°</b>	Minimum Alt <b>D5.0</b> 1500' (1487')	MDA(H) <b>460'</b> (447')	Apt Elev 16' Rwy 13'	
<b>MISSED APCH: Climb on LMM VOR R-270 to D7.0, then turn LEFT within 10 NM to LMM VOR at the minimum holding altitude.</b>					
Alt Set: MB (IN on req)		Rwy Elev: 0 MB	Trans level: FL 195	Trans alt: 18500'	MSA LMM VOR



RECOMMENDED ALTITUDES	
LMM DME	ALTITUDE
4.0	1210'
3.0	920'
2.0	630'



Gnd speed-Kts	70	90	100	120	140	160	REIL PAPI-L	LMM on 115.5 R-270	D7.0
Descent Angle 2.71°	336	431	479	575	671	767			
MAP at VOR or D5.0 to MAP	5.0	4:17	3:20	3:00	2:30	2:09	1:53		

STRAIGHT-IN LANDING RWY 27			CIRCLE-TO-LAND	
MDA(H) <b>460'</b> (447')			Max Kts	MDA(H)
A			90	560' (544') -1
B	1		120	560' (544') -1
C	1 1/4		140	560' (544') -1 1/2
D	1 1/2		165	580' (564') -2

CHANGES: Procedure.

© JEPPESEN, 2002, 2016. ALL RIGHTS RESERVED.

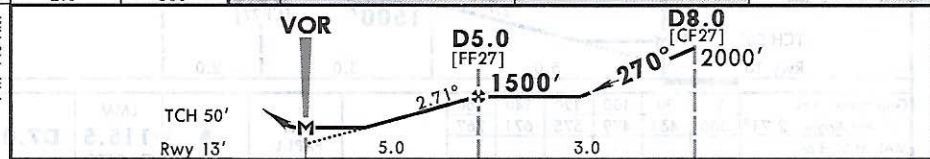
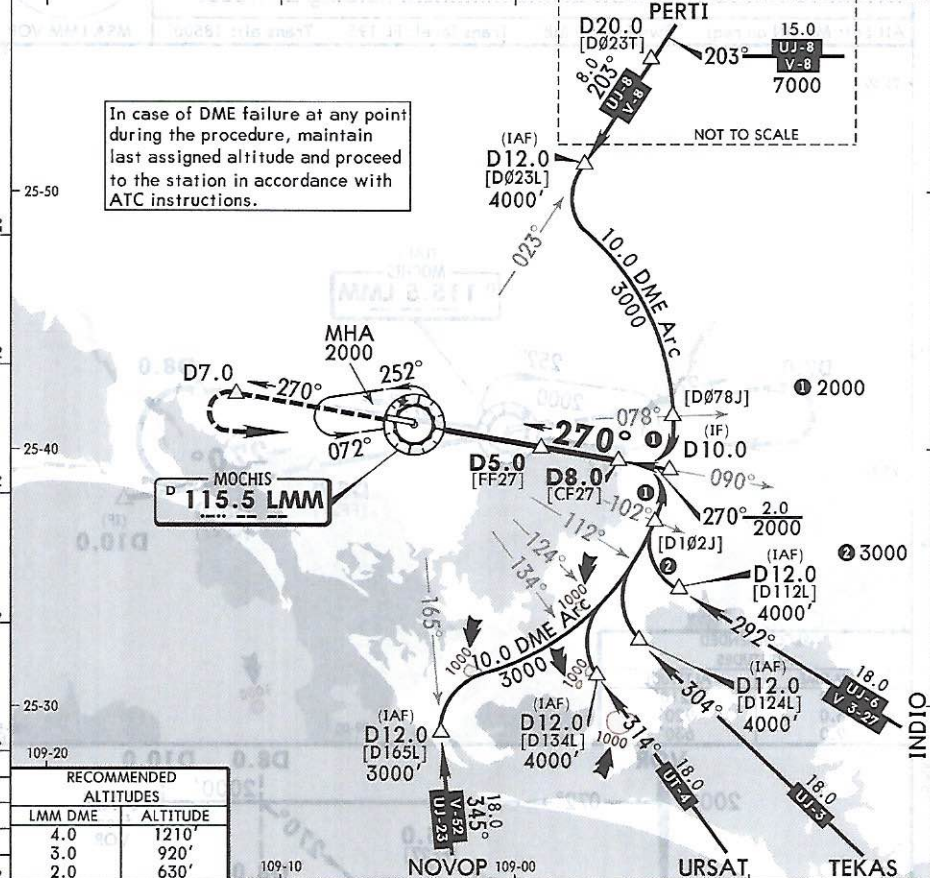


**MMLM/LMM**  
**VALLE DEL FUERTE INTL**

**JEPPESEN**  
 22 APR 16 (13-5) Eff 28 Apr

**LOS MOCHIS, MEXICO**  
**VOR DME 2 Rwy 27**

*LOS MOCHIS Approach <b>118.8</b>			*LOS MOCHIS Tower <b>118.8</b>		
VOR LMM <b>115.5</b>	Final Apch Crs <b>270°</b>	Minimum Alt <b>D5.0</b> 1500' (1487')	MDA(H) <b>460'</b> (447')	Apt Elev 16'	Rwy 13'
<b>MISSED APCH:</b> Climb on LMM VOR R-270 to D7.0, then turn LEFT within 10 NM to LMM VOR at the minimum holding altitude. Alt Set: MB (IN on req) Rwy Elev: 0 MB Trans level: FL 195 Trans alt: 18500' MSA LMM VOR					

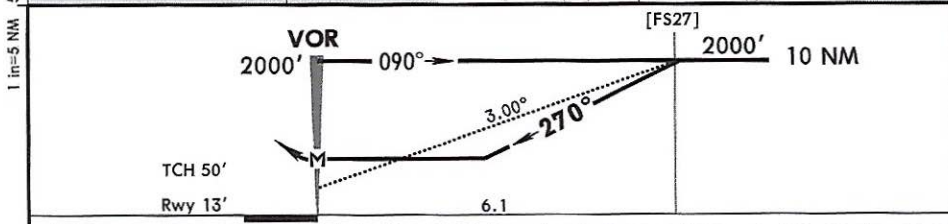
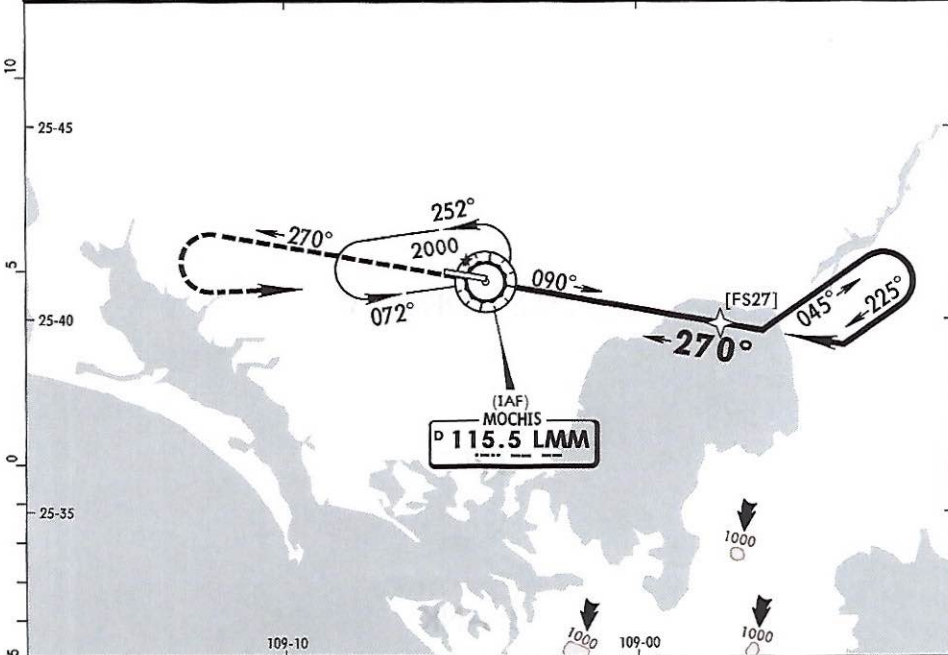


Gnd speed-Kts	70	90	100	120	140	160	REIL PAPI-L	LMM on 115.5 <b>R-270</b>	<b>D7.0</b>
Descent Angle 2.71°	336	431	479	575	671	767			
MAP at VOR or D5.0 to MAP	5.0	4:17	3:20	3:00	2:30	2:09	1:53		

STRAIGHT-IN LANDING RWY 27			CIRCLE-TO-LAND		
MDA(H) <b>460'</b> (447')			MDA(H)		
A			Max Kts	90	560' (544') - 1
B	1		120		560' (544') - 1
C	1 1/4		140		560' (544') - 1 1/2
D	1 1/2		165		580' (564') - 2

CHANGES: Procedure. © JEPPESEN, 2006, 2016. ALL RIGHTS RESERVED.

*LOS MOCHIS Approach 118.8			*LOS MOCHIS Tower 118.8		
VOR LMM 115.5	Final Apch Crs 270°	No FAF	MDA(H) 500' (487')	Apt Elev 16' Rwy 13'	
MISSED APCH: Climb on LMM VOR R-270, turn LEFT within 10 NM to LMM VOR at the minimum holding altitude.					
MISSED APCH: Max Distance Outbound Track 7 NM Gnd speed-Kts: 80 100 120 140 160 180 200 MAP to turn 7 NM: 5:15 4:12 3:30 3:00 2:37 2:20 2:06					
Alt Set: MB (IN on req)		Rwy Elev: 0 MB	Trans level: FL 195	Trans alt: 18500'	MSA LMM VOR



Gnd speed-Kts	70	90	100	120	140	160	REIL PAPI-L	LMM on 115.5 R-270
Descent Angle 3.00°	372	478	531	637	743	849		

STRAIGHT-IN LANDING RWY 27			CIRCLE-TO-LAND		
MDA(H) 500' (487')			MDA(H)		
A	1		Max Kts 90	560' (544') - 1	
B	1 1/4		120	560' (544') - 1 1/2	
C	1 1/2		140	580' (564') - 2	
D			165		

CHANGES: Procedure.

© JEPPesen, 2007, 2016. ALL RIGHTS RESERVED.